

1

Front Yard Plan



Scale: 1" = 20'-0"

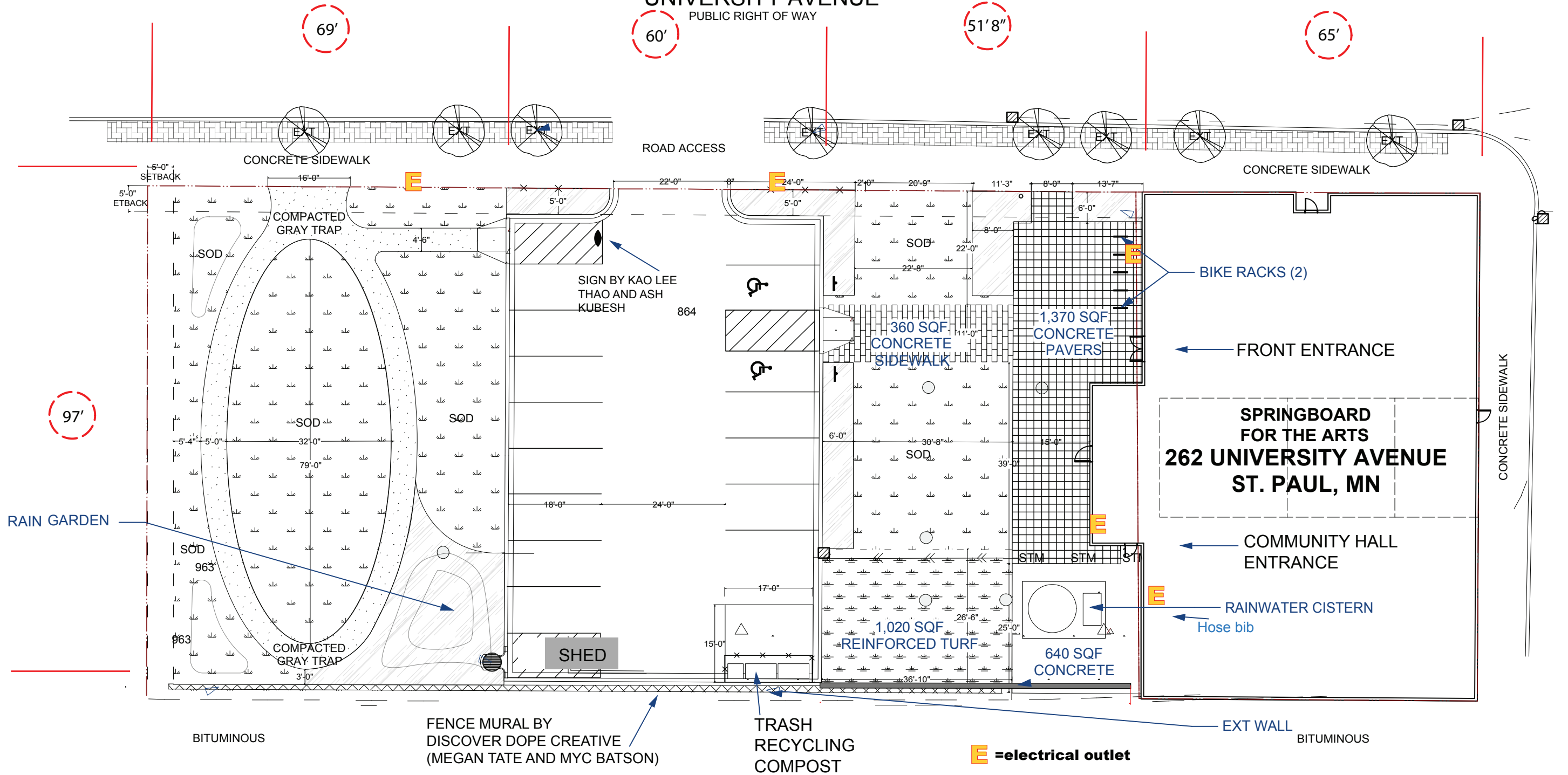
SPRINGBOARD

for the arts

LIGHT RAIL TRACKS

UNIVERSITY AVENUE

PUBLIC RIGHT OF WAY



69'

60'

51'8"

65'

97'

GALTIER STREET
AKA JAY STREET

SPRINGBOARD FOR THE ARTS

262 UNIVERSITY AVENUE
ST. PAUL, MN

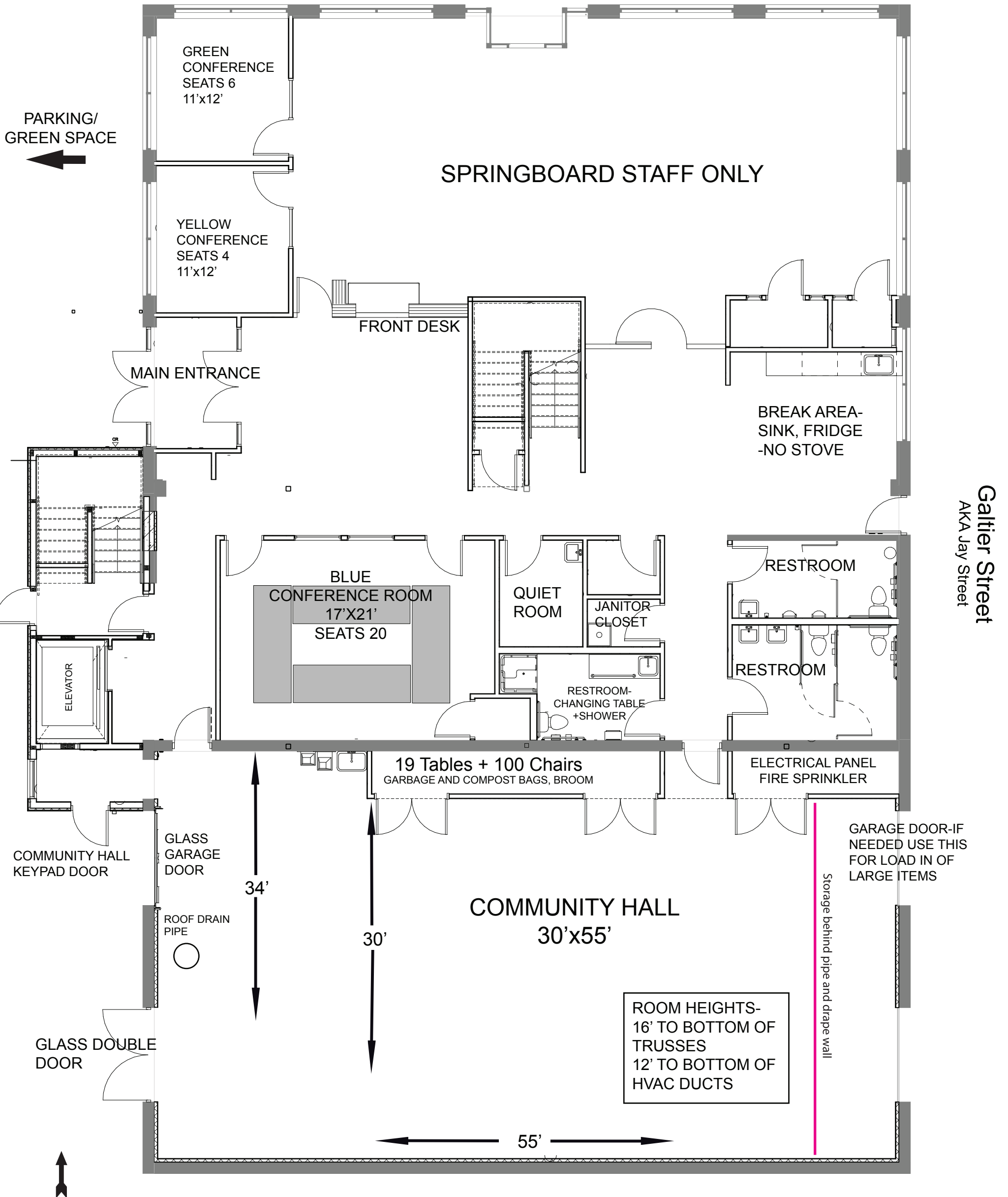
E = electrical outlet

TE

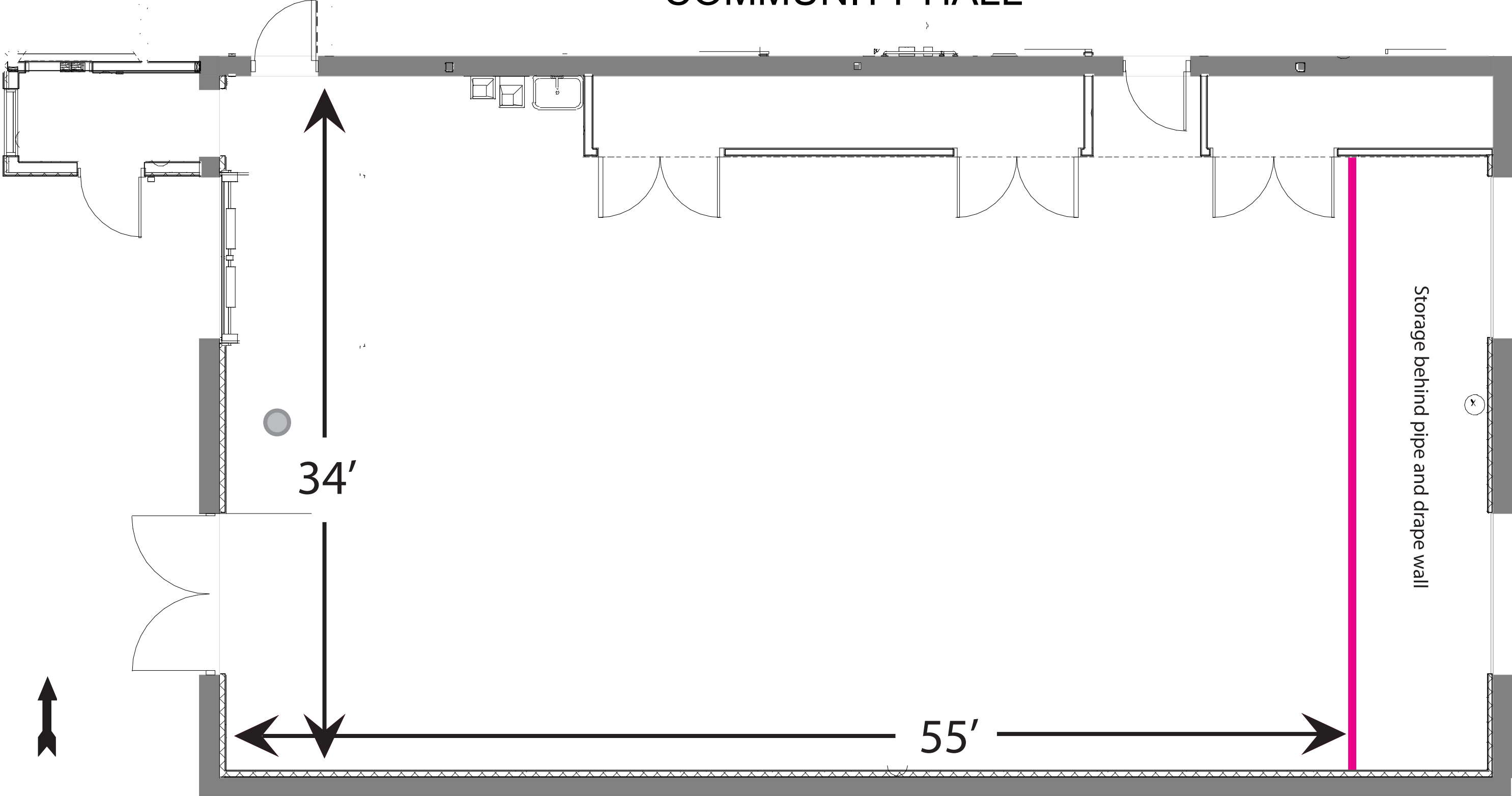
FLOOR PLAN- FIRST FLOOR



University Avenue W



COMMUNITY HALL



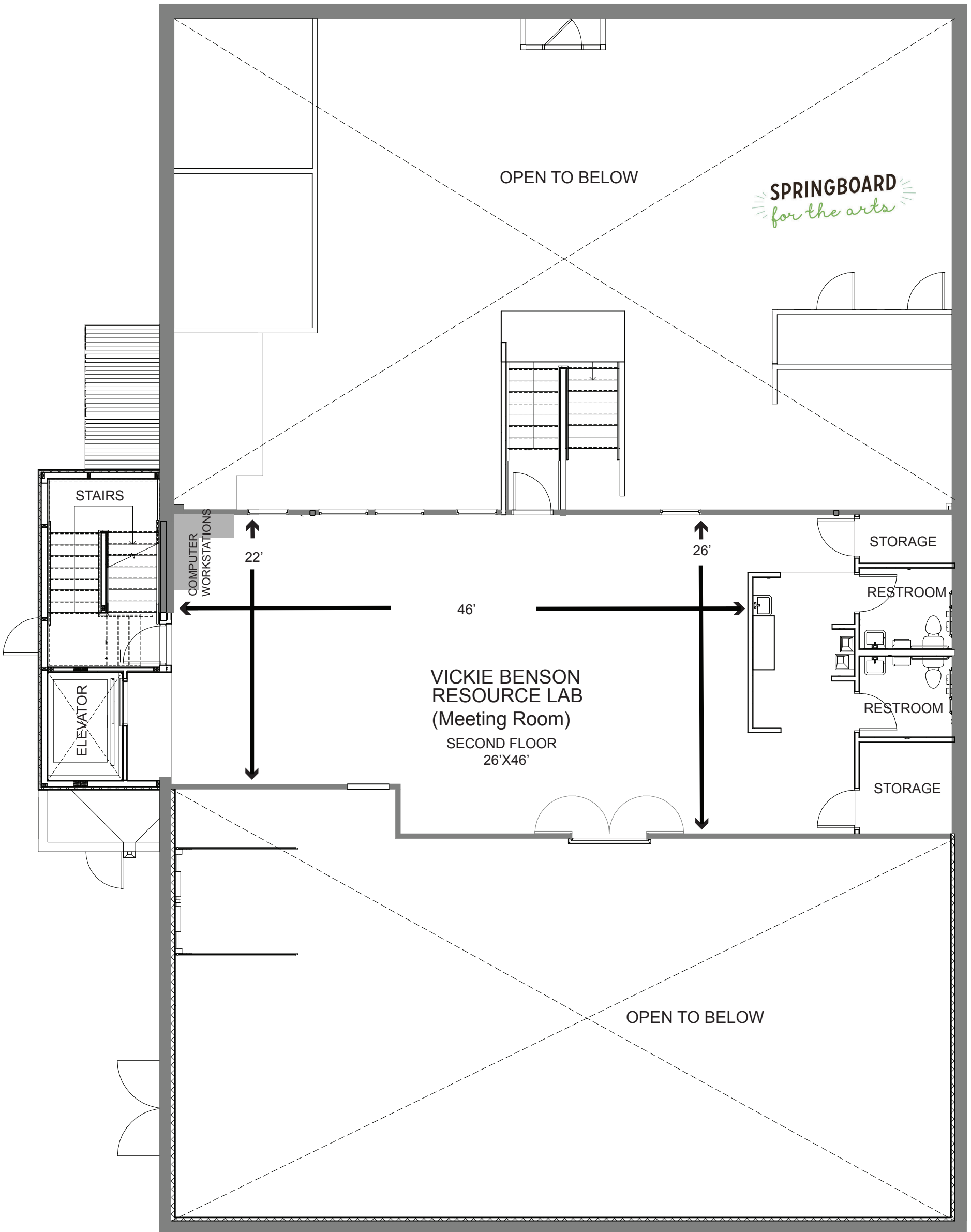
34'

55'

Storage behind pipe and drape wall

Springboard tables are 29" x 71"

SPRINGBOARD
for the arts



OPEN TO BELOW

SPRINGBOARD
for the arts

STAIRS

COMPUTER
WORKSTATIONS

22'

26'

STORAGE

RESTROOM

46'

VICKIE BENSON
RESOURCE LAB
(Meeting Room)

SECOND FLOOR
26'X46'

RESTROOM

STORAGE

OPEN TO BELOW

ELEVATOR

97'

GALTIER AVE

SPRINGBOARD
for the arts

ROOF PLAN

Roof Top HVAC Unit (RTU)

RTU

SOLAR PANEL
TRELLIS ABOVE
TERRACE

65'

ROOF DRAINS

BLAYZE BUSETH
SCULPTURES

ROOF DRAINS

UA SI WATERSHED SYSTEM ART

UNIVERSITY AVENUE

ECOLAB SKYLINE
TERRACE
aka Rooftop
21'6" x 29'

RAILING AROUND
TERRACE-NO
ACCESS TO ROOF

HOSE BIB

RTU

E

E

CLOSET

ELEVATOR
VESTIBULE



STAIRWELL

ELEVATOR

E = electrical outlet



The **Community Hall** is a 2,535 square foot open room with restroom access, equipped with chairs and folding tables, as well as a stage that can be configured. This space is ideal for creative meetings, presentations, or workshops for up to 40 people seated with tables, and 100 seated auditorium-style or standing in COVID-safe configurations.

The **Front Yard** is our entire outdoor green space area, including the patio in front of the building, parking lot, and grass and walking path on our property. This space is ideal for medium to large private and/or public events. It can hold roughly 12-15 10x10ft. tents, 1-2 food trucks, and approximately 150-300 people. Renter must also rent the **Community Hall** when reserving the Front Yard.

The **Rooftop** is a 435 square foot rooftop area with a city view, restroom access, and can be rented for small gatherings, meetings, parties, and creative activities. It can hold approximately 30 people standing or 20 seated in COVID-safe configurations.